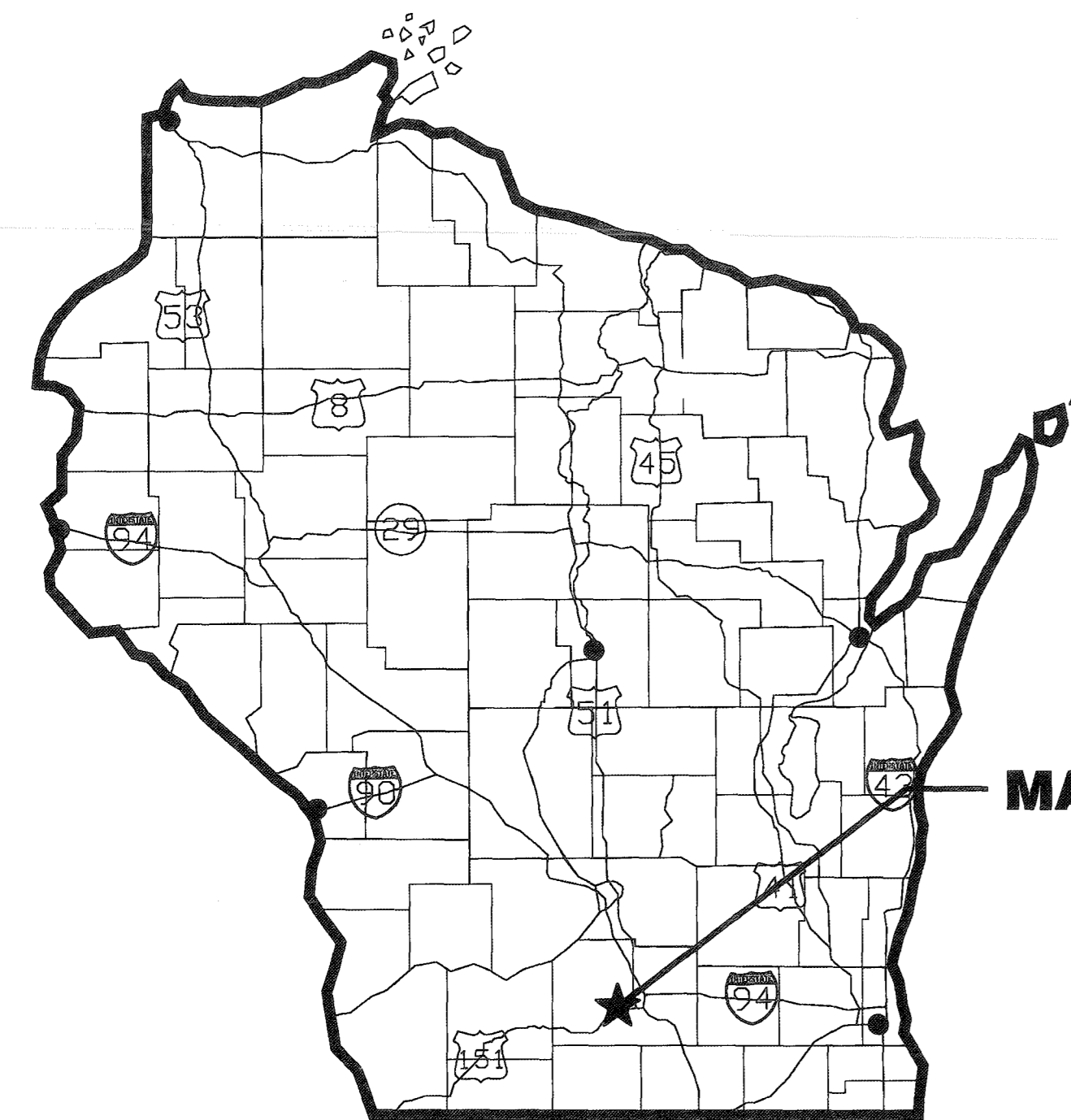


MONONA TERRACE FIRE ALARM SYSTEM UPGRADES

FOR THE CITY OF MADISON MADISON, WISCONSIN

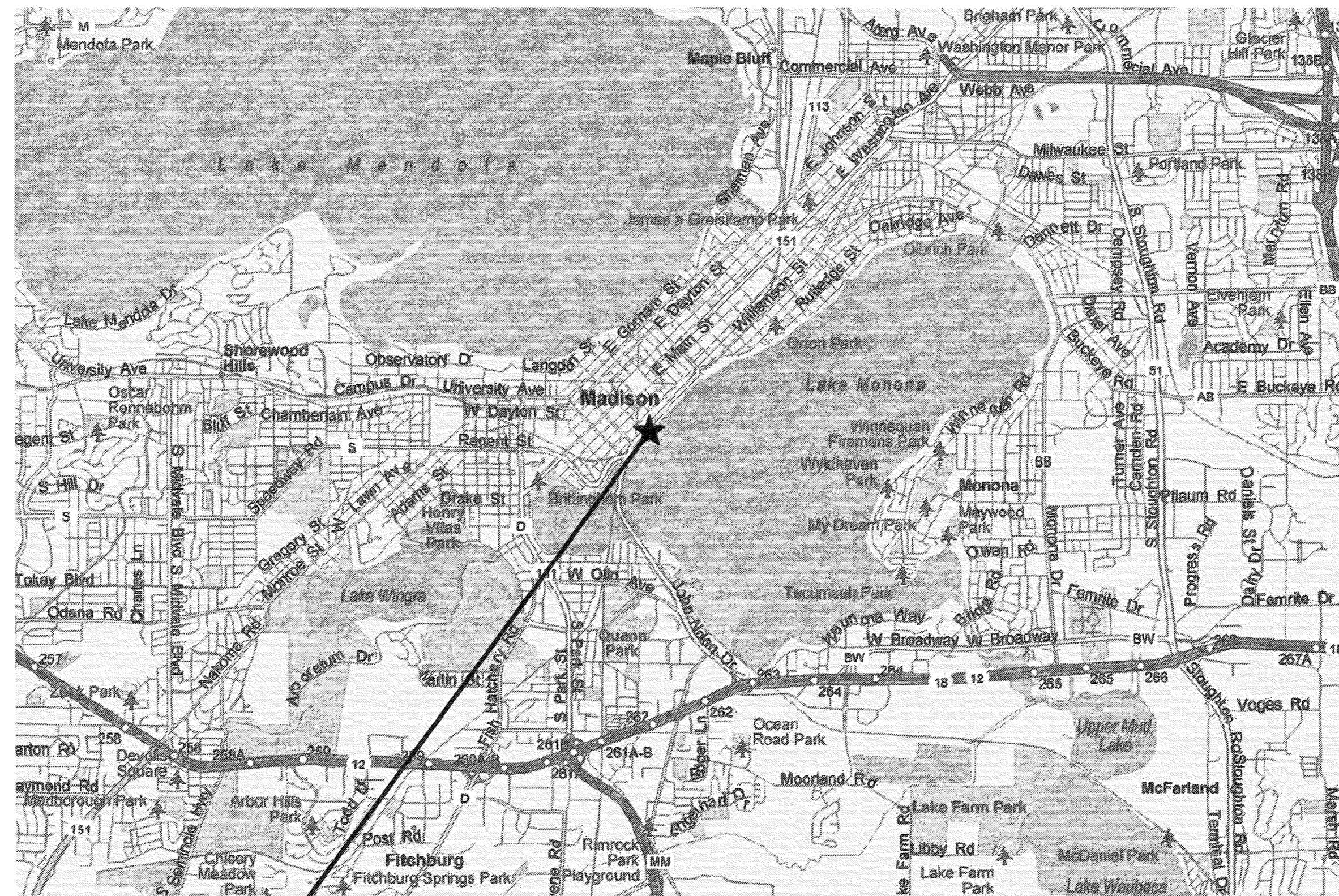


MADISON, WISCONSIN

AREA MAP
NO SCALE



**MONONA TERRACE
1 JOHN NOLEN DRIVE
MADISON, WISCONSIN 53703**

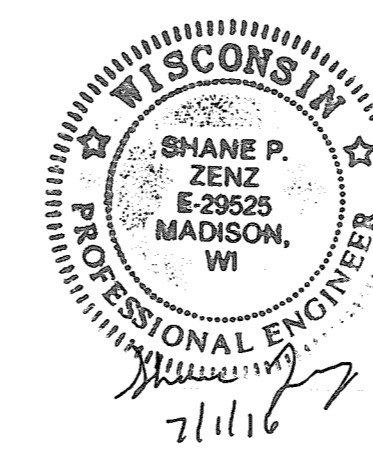


PROJECT LOCATION MAP
NO SCALE



LIST OF DRAWINGS

SHEET NO.	DRAWING NO.	TITLE
1	G0.1	TITLE SHEET, LOCATION MAPS, AND LIST OF DRAWINGS
2	G0.2	STANDARD ABBREVIATIONS AND SYMBOLS
3	E1.0	LEVEL 29' AND 40' OVERALL PARKING RAMP FLOOR PLAN
4	ED1.1	LEVEL 4.6' DEMOLITION FLOOR PLAN - EAST
5	ED1.2	LEVEL 4.6' DEMOLITION FLOOR PLAN - WEST
6	ED1.3	LEVEL 19' DEMOLITION FLOOR PLAN - EAST
7	ED1.4	LEVEL 19' DEMOLITION FLOOR PLAN - WEST
8	ED1.5	LEVEL 29' DEMOLITION FLOOR PLAN - EAST
9	ED1.6	LEVEL 29' DEMOLITION FLOOR PLAN - WEST
10	ED1.7	LEVEL 40' DEMOLITION FLOOR PLAN - EAST
11	ED1.8	LEVEL 40' DEMOLITION FLOOR PLAN - WEST
12	ED1.9	LEVEL 52/56' DEMOLITION FLOOR PLAN - EAST
13	ED1.10	LEVEL 52/56' DEMOLITION FLOOR PLAN - WEST
14	ED1.11	LEVEL 65' DEMOLITION FLOOR PLAN - EAST
15	ED1.12	LEVEL 65' DEMOLITION FLOOR PLAN - WEST
16	ED1.13	DEMOLITION ENLARGED PLANS - 1
17	ED1.14	DEMOLITION ENLARGED PLANS - 2
18	E1.1	LEVEL 4.6' FLOOR PLAN - EAST
19	E1.2	LEVEL 4.6' FLOOR PLAN - WEST
20	E1.3	LEVEL 19' FLOOR PLAN - EAST
21	E1.4	LEVEL 19' FLOOR PLAN - WEST
22	E1.5	LEVEL 29' FLOOR PLAN - EAST
23	E1.6	LEVEL 29' FLOOR PLAN - WEST
24	E1.7	LEVEL 40' FLOOR PLAN - EAST
25	E1.8	LEVEL 40' FLOOR PLAN - WEST
26	E1.9	LEVEL 52/56' FLOOR PLAN - EAST
27	E1.10	LEVEL 52/56' FLOOR PLAN - WEST
28	E1.11	LEVEL 65' FLOOR PLAN - EAST
29	E1.12	LEVEL 65' FLOOR PLAN - WEST
30	E1.13	ENLARGED PLANS - 1
31	E1.14	ENLARGED PLANS - 2



910 WEST WINGRA DRIVE
MADISON, WI 53715
608-251-4843
608-251-8655 fax
www.strand.com

CONTRACT 7730

ISSUED FOR BID, 07/01/16

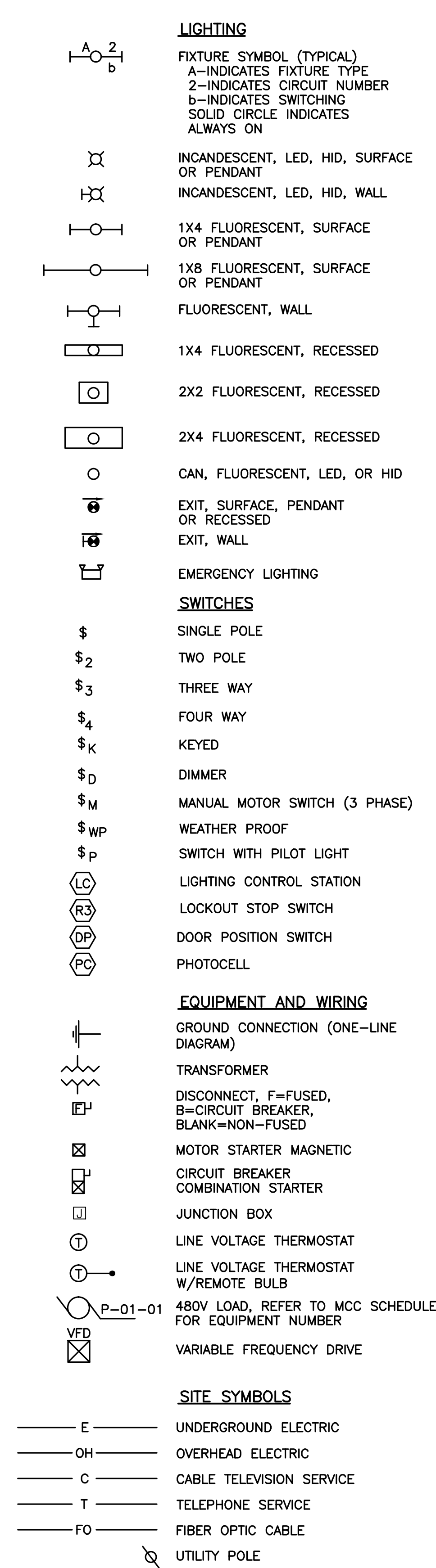


SHEET
1
G0.1

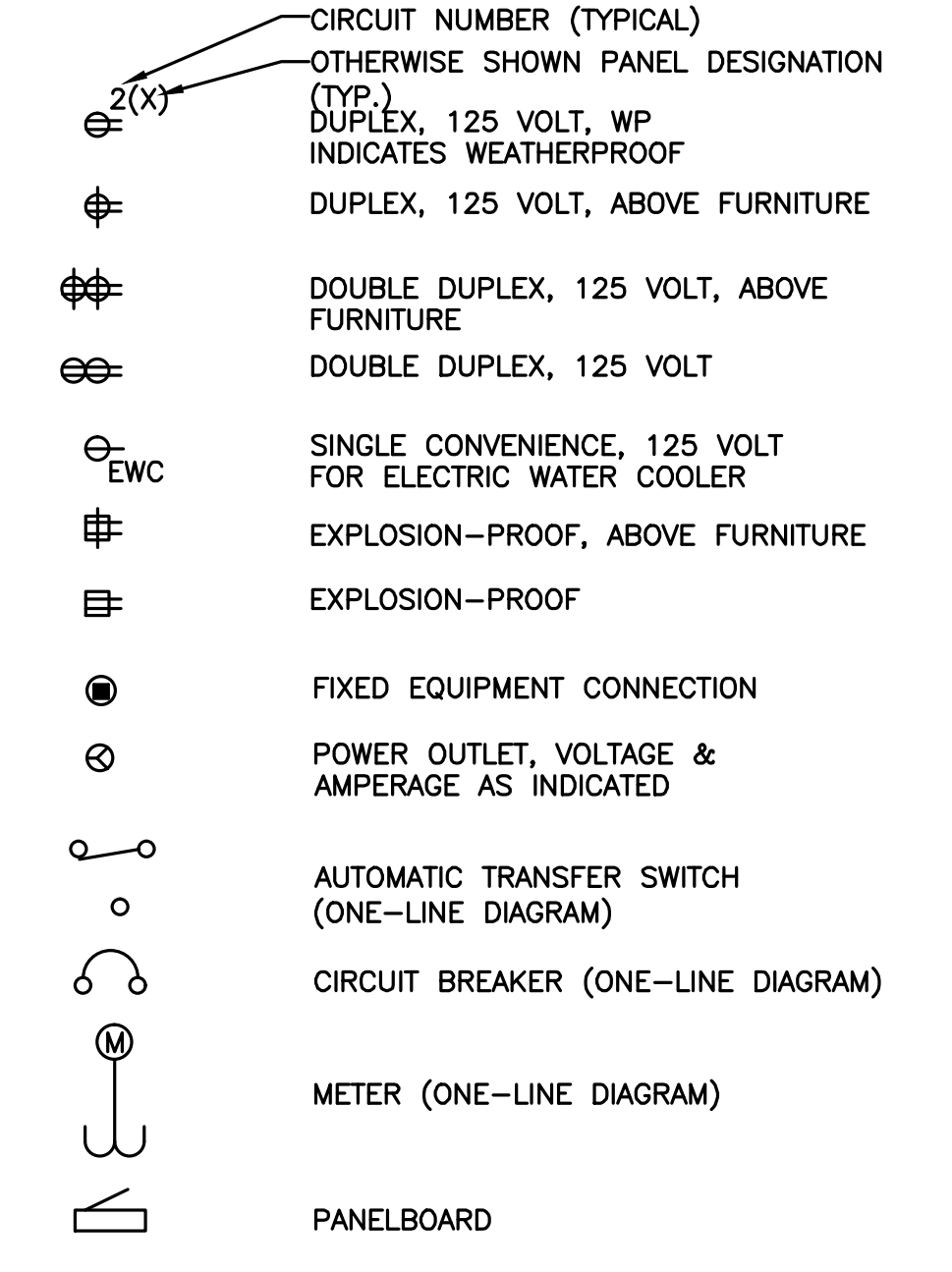
ELECTRICAL ABBREVIATIONS

A AMPERE	MV MEDIUM VOLTAGE
AF AMPERE FRAME	MW MICROWAVE OR MEGAWATT
AFG ABOVE FINISHED FLOOR	N NEUTRAL
AHJ AUTHORITY HAVING JURISDICTION	NA NOT APPLICABLE
AHU AIR HANDLING UNIT	NC NORMALLY CLOSED
AIC AMPERE INTERRUPTING CAPACITY	NAC NOTIFICATION APPLIANCE CIRCUIT PANEL
AL ALUMINUM	NEC NATIONAL ELECTRIC CODE
AT AMPERE TRIP	NIC NOT IN CONTRACT
ATS AUTOMATIC TRANSFER SWITCH	NL NIGHT LIGHT
AV AUDIO VISUAL	NM NONMETALLIC
AWG AMERICAN WIRE GAUGE	NO NORMALLY OPEN
BD BEAM DETECTOR	NSF NATIONAL SANITARY FOUNDATION
BLDG BUILDING	NTS NOT TO SCALE
C CONDUIT	OCB OIL CIRCUIT BREAKER
CAT CATALOG	OL OVERLOAD
CATV CABLE TELEVISION	OT OVERTEMP
CB CIRCUIT BREAKER	PR PAIR
CCTV CLOSED CIRCUIT TELEVISION	P POLE
CKT CIRCUIT	PB PULL BOX
CL CENTERLINE	PC PULL CORD
CLG CEILING	PH PH SENSOR
COL COLUMN	ø PHASE
CT CURRENT TRANSFORMER	PNL PANELBOARD
CTE CONNECT TO EXISTING	PRI PRIMARY
CU COPPER	PT POTENTIAL TRANSFORMER
CUH CABINET UNIT HEATER	PTZ PAN, TILT, ZOOM CAMERA
D DEDICATED	PVC POLYVINYL CHLORIDE
DC DIRECT CURRENT	PWR POWER
DISC DISCONNECT	RSC RIGID GALVANIZED STEEL CONDUIT
DWG DRAWING	RTS REMOTE TEST SWITCH
E EMERGENCY	RVNR REDUCED VOLTAGE NON-REVERSING
EC ELECTRICAL CONTRACTOR	RVSS REDUCED VOLTAGE SOLID STATE
EDH ELECTRIC DUCT HEATER	SC SHORT CIRCUIT
EF EXHAUST FAN	SCADA SUPERVISORY CONTROL AND DATA
EMT ELECTRICAL METALLIC TUBING	SCC SUPERVISORY CONTROL CENTER
EOL END OF LINE DEVICE	SE SERVICE ENTRANCE
EWC ELECTRIC WATER COOLER	SEC SECONDARY
EX EXISTING	SH SHIELDED
FAAP FIRE ALARM ANNUNCIATOR PANEL	SS STAINLESS STEEL
FACP FIRE ALARM CONTROL PANEL	STP SHIELDED TWISTED PAIR
FCU FAN COIL UNIT	SV SOLENOID VALVE
FLA FULL LOAD AMPERES	SW SWITCH
FPCP FIRE PUMP CONTROL PANEL	SWBD SWITCHBOARD
FR FIRE RETARDANT	TEL TELEPHONE
FT FEET	TS2W TWO SPEED TWO WINDING
FDA FOOD AND DRUG ADMINISTRATION	TYP TYPICAL
FNVR FULL VOLTAGE NON-REVERSING	UG UNDERGROUND
FVR FULL VOLTAGE REVERSING	UH UNIT HEATER
G GROUND	UPS UNINTERRUPTIBLE POWER SUPPLY
GC GENERAL CONTRACTOR	UTP UNSHIELDED TWISTED PAIR
GFI GROUND FAULT INTERRUPTER	V VOLTS
GFP GROUND FAULT PROTECTION (EQUIPMENT)	VFD VARIABLE FREQUENCY DRIVE
GFCI GROUND FAULT CKT INTERRUPTER	W WIRE OR WATT
GRS GALVANIZED RIGID STEEL	WD HIGH PRESSURE WASH DOWN
HACR HEATING AND AIR CONDITIONING RATED	WL WET LOCATION
HP HORSEPOWER	WP WEATHERPROOF
HV HIGH VOLTAGE	XFMR TRANSFORMER
HVAC HEATING, VENTILATING, & AIR CONDITIONING	XP EXPLOSION PROOF
HZ HERTZ	
IG ISOLATED GROUND	
IMC INTERMEDIATE METAL CONDUIT	
JB JUNCTION BOX	
KCMIL ONE THOUSAND CIRCULAR MILS	
KO KNOCKOUT	
KVA KILOVOLT AMPERES	
KVAR KILOVOLT AMPERES REACTIVE	
KW KILOWATT	
LP LIGHTING PANEL	
LTG LIGHTING	
LV LOW VOLTAGE	
MATV MASTER ANTENNA TELEVISION	
MC METAL CLAD	
MCC MOTOR CONTROL CENTER	
MCB MAIN CIRCUIT BREAKER	
MCCB MOLDED CASE CIRCUIT BREAKER	
MCM THOUSAND CIRCULAR MILS	
MCP MOTOR CIRCUIT PROTECTOR	
MDP MAIN DISTRIBUTION PANELBOARD	
MISC MISCELLANEOUS	
MLO MAIN LUGS ONLY	
MO MOTOR OPERATED	
MTD MOUNTED	
MTG MOUNTING	
MTS MANUAL TRANSFER SWITCH	
MV MEDIUM VOLTAGE	

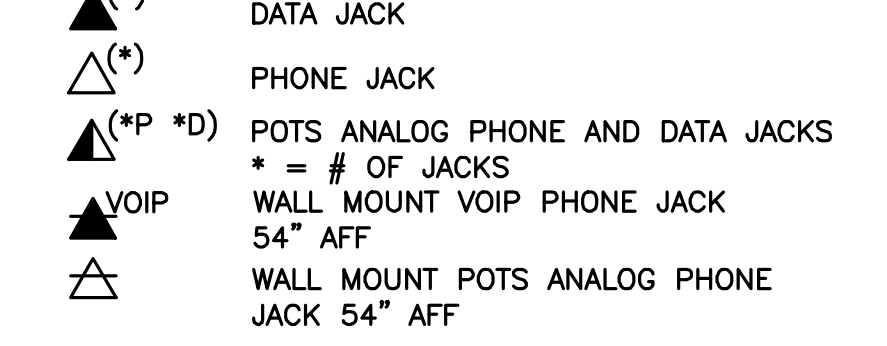
ELECTRICAL SYMBOLS



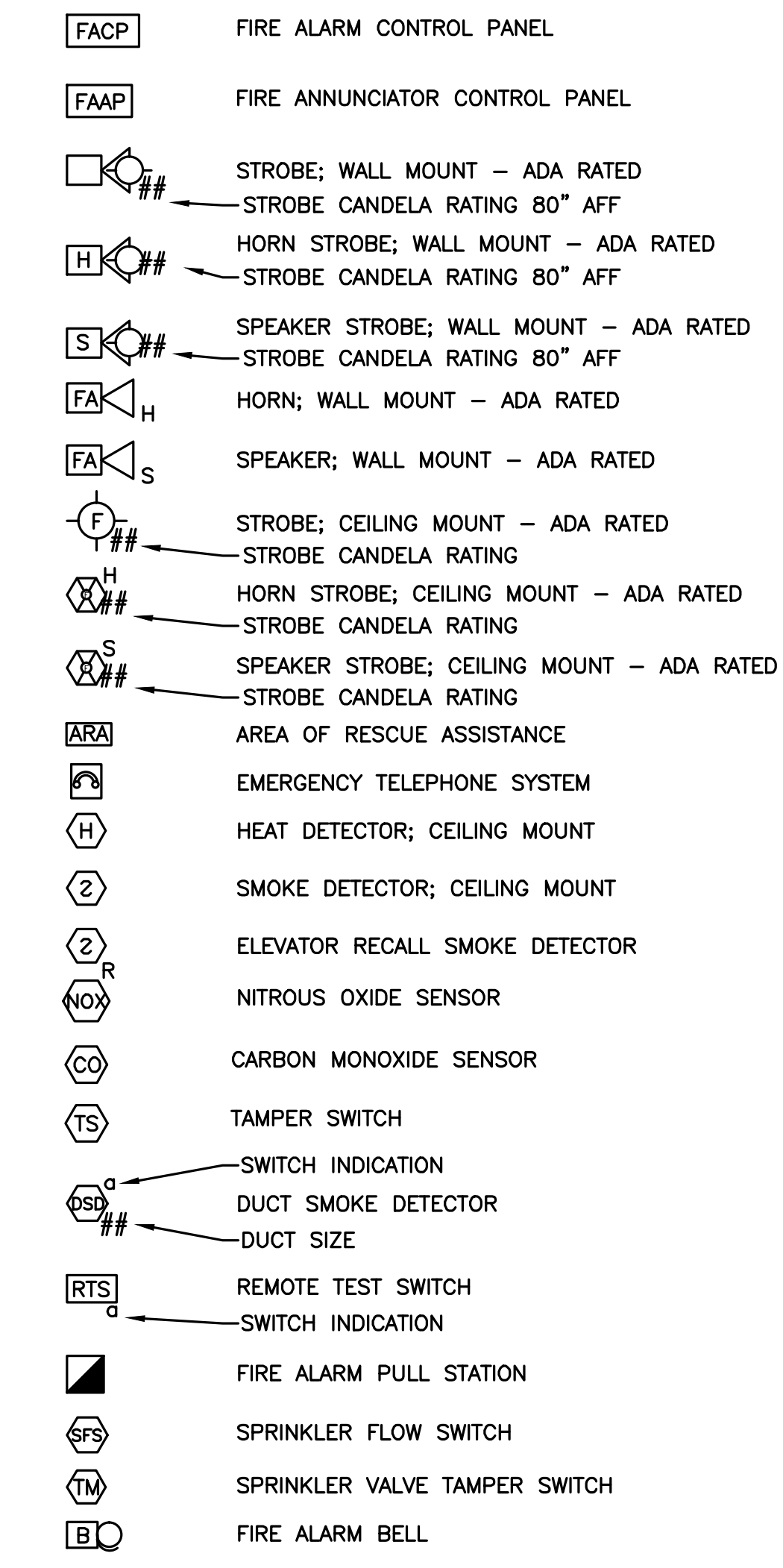
POWER SYMBOLS



TECHNOLOGY SYMBOLS



FIRE ALARM AND DETECTION SYMBOLS



DATE	07/07/2016
REVISIONS	
NO.	1

STANDARD ABBREVIATIONS AND SYMBOLS
MONONA TERRACE FIRE ALARM SYSTEM UPGRADES
CITY OF MADISON
MADISON, WISCONSIN

JOB NO.
1.020-095
PROJECT MGR.
MATTHEW CARERROS

SHEET
2
G0.2

GENERAL NOTES:

1. NOT ALL EXISTING EQUIPMENT SHOWN. ALL LOCATIONS ARE APPROXIMATE. CONTRACTOR SHALL FIELD VERIFY THE LOCATION OF ALL EXISTING EQUIPMENT.
2. ALL HOLES AND OPENINGS NOT BEING REUSED FROM EQUIPMENT, ETC., WHICH ARE BEING REMOVED FROM PLASTER FINISHES SHALL BE CAPPED. ALL HOLES AND OPENINGS NOT BEING REUSED FROM EQUIPMENT, ETC., WHICH ARE BEING REMOVED FROM GYPSUM BOARD FINISHES SHALL BE PATCHED AND PAINTED TO MATCH EXISTING SURFACES.
3. SEAL AND CAP ALL EXISTING CONDUIT AND PENETRATIONS THAT ARE NOT BEING REUSED. ALL CONDUIT PENETRATIONS BETWEEN INTERIOR SPACES SHALL BE CONSIDERED FIRE RATED PENETRATIONS AND SHALL BE SEALED TO MAINTAIN THE EXISTING FIRE RATINGS.
4. REMOVE ALL EXISTING ELECTRICAL EQUIPMENT AND MATERIALS ASSOCIATED WITH THE ITEMS BEING REMOVED, AS WELL AS ELECTRICAL DEVICES, MATERIALS, AND EQUIPMENT NOT BEING REUSED.
5. DISCONNECT ALL FIRE ALARM DEVICE CONDUIT AND WIRING AND PREPARE FOR REUSE. PROVIDE NEW DEVICE WITHIN EXISTING LOCATION AS SHOWN ON SHEET E1.3, UNLESS NOTED OTHERWISE. PROVIDE NEW CONDUIT AND WIRING AS REQUIRED TO REFEED NEW DEVICES.
6. REFER TO SPECIFICATION SECTION 01010 FOR CONSTRUCTION SEQUENCE.

DEMOLITION NOTES:

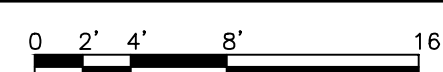
- [A] REMOVE CEILING MOUNTED DEVICE AND DISCONNECT ALL ASSOCIATED CONDUIT AND WIRING. PROVIDE BLANK FACEPLATE AND TERMINAL BLOCKS WITHIN BOX TO EXTEND WIRING TO THE NEXT DEVICE ON THE CIRCUIT.



SEE SHEET ED1.4 FOR CONTINUATION

SEE LEVEL 4.6' DEMOLITION ENLARGED PLAN - 4 ON SHEET ED1.14

LEVEL 19' DEMOLITION FLOOR PLAN - EAST



DATE:	
REVISIONS	
NO.	REVISED FOR

LEVEL 19' DEMOLITION FLOOR PLAN - EAST

MONONA TERRACE FIRE ALARM SYSTEM UPGRADES

CITY OF MADISON
MADISON, WISCONSIN

JOB NO.
1.020-095



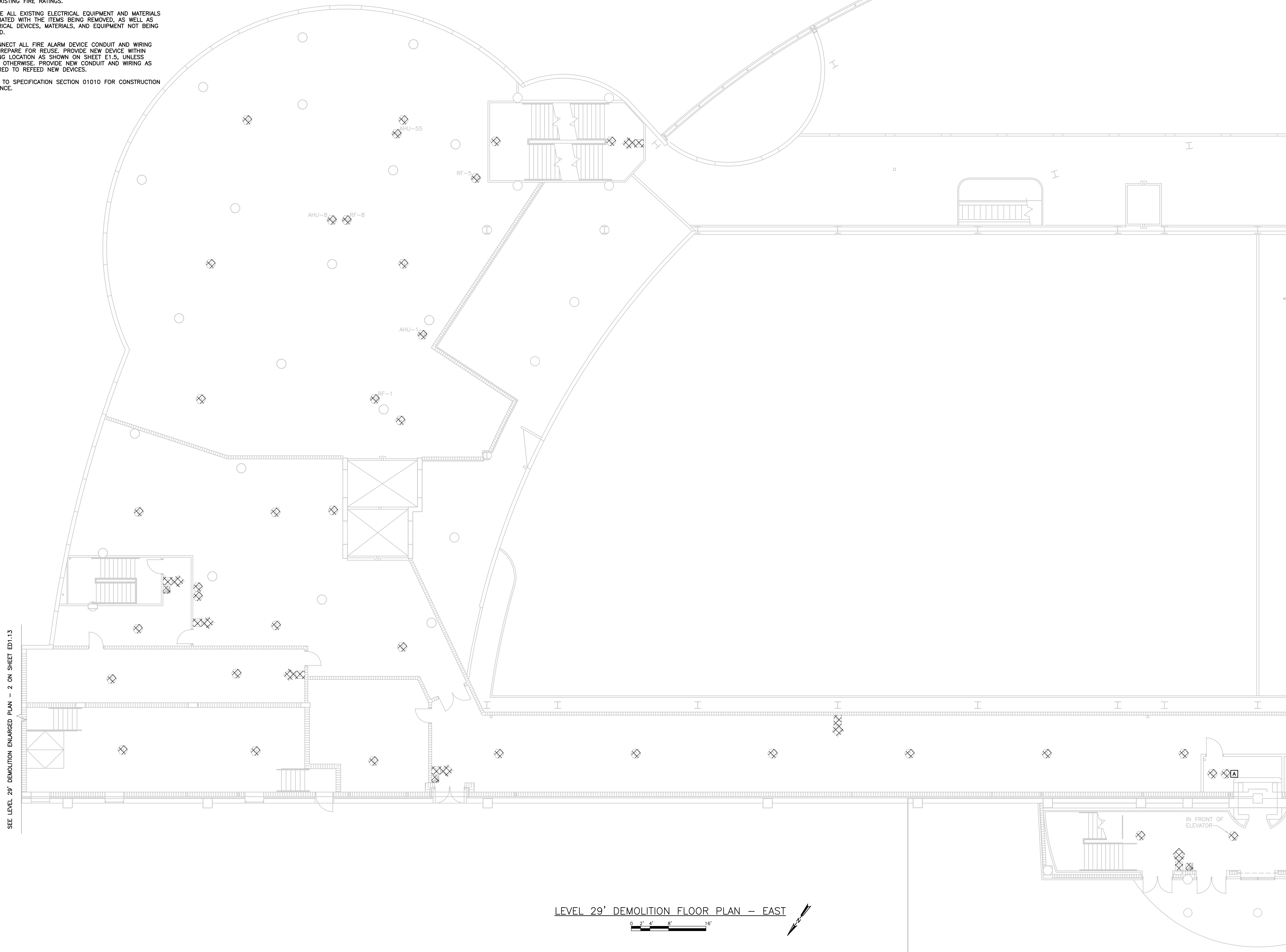
SHEET
6
ED1.3

GENERAL NOTES:

1. NOT ALL EXISTING EQUIPMENT SHOWN. ALL LOCATIONS ARE APPROXIMATE. CONTRACTOR SHALL FIELD VERIFY THE LOCATION OF ALL EXISTING EQUIPMENT.
2. ALL HOLES AND OPENINGS NOT BEING REUSED FROM EQUIPMENT, ETC., WHICH ARE BEING REMOVED FROM PLASTER FINISHES SHALL BE CAPPED. ALL HOLES AND OPENINGS NOT BEING REUSED FROM EQUIPMENT, ETC., WHICH ARE BEING REMOVED FROM GYPSUM BOARD FINISHES SHALL BE PATCHED AND PAINTED TO MATCH EXISTING SURFACES.
3. SEAL AND CAP ALL EXISTING CONDUIT AND PENETRATIONS THAT ARE NOT BEING REUSED. ALL CONDUIT PENETRATIONS BETWEEN INTERIOR SPACES SHALL BE CONSIDERED FIRE RATED PENETRATIONS AND SHALL BE SEALED TO MAINTAIN THE EXISTING FIRE RATINGS.
4. REMOVE ALL EXISTING ELECTRICAL EQUIPMENT AND MATERIALS ASSOCIATED WITH THE ITEMS BEING REMOVED, AS WELL AS ELECTRICAL DEVICES, MATERIALS, AND EQUIPMENT NOT BEING REUSED.
5. DISCONNECT ALL FIRE ALARM DEVICE CONDUIT AND WIRING AND PREPARE FOR REUSE. PROVIDE NEW DEVICE WITHIN EXISTING LOCATION AS SHOWN ON SHEET E1.5, UNLESS NOTED OTHERWISE. PROVIDE NEW CONDUIT AND WIRING AS REQUIRED TO REFEED NEW DEVICES.
6. REFER TO SPECIFICATION SECTION 01010 FOR CONSTRUCTION SEQUENCE.

DEMOLITION NOTES:

- [A] REMOVE CEILING MOUNTED DEVICE AND DISCONNECT ALL ASSOCIATED CONDUIT AND WIRING. PROVIDE BLANK FACEPLATE AND TERMINAL BLOCKS WITHIN BOX TO EXTEND WIRING TO THE NEXT DEVICE ON THE CIRCUIT.



SEE LEVEL 29' DEMOLITION ENLARGED PLAN - 2 ON SHEET ED1.13

SEE SHEET ED1.6 FOR CONTINUATION

LEVEL 29' DEMOLITION FLOOR PLAN - EAST

NO.	DATE	BY	CHECKED	REVISIONS

LEVEL 29' DEMOLITION FLOOR PLAN - EAST
 MONONA TERRACE FIRE ALARM SYSTEM UPGRADES
 CITY OF MADISON
 MADISON, WISCONSIN

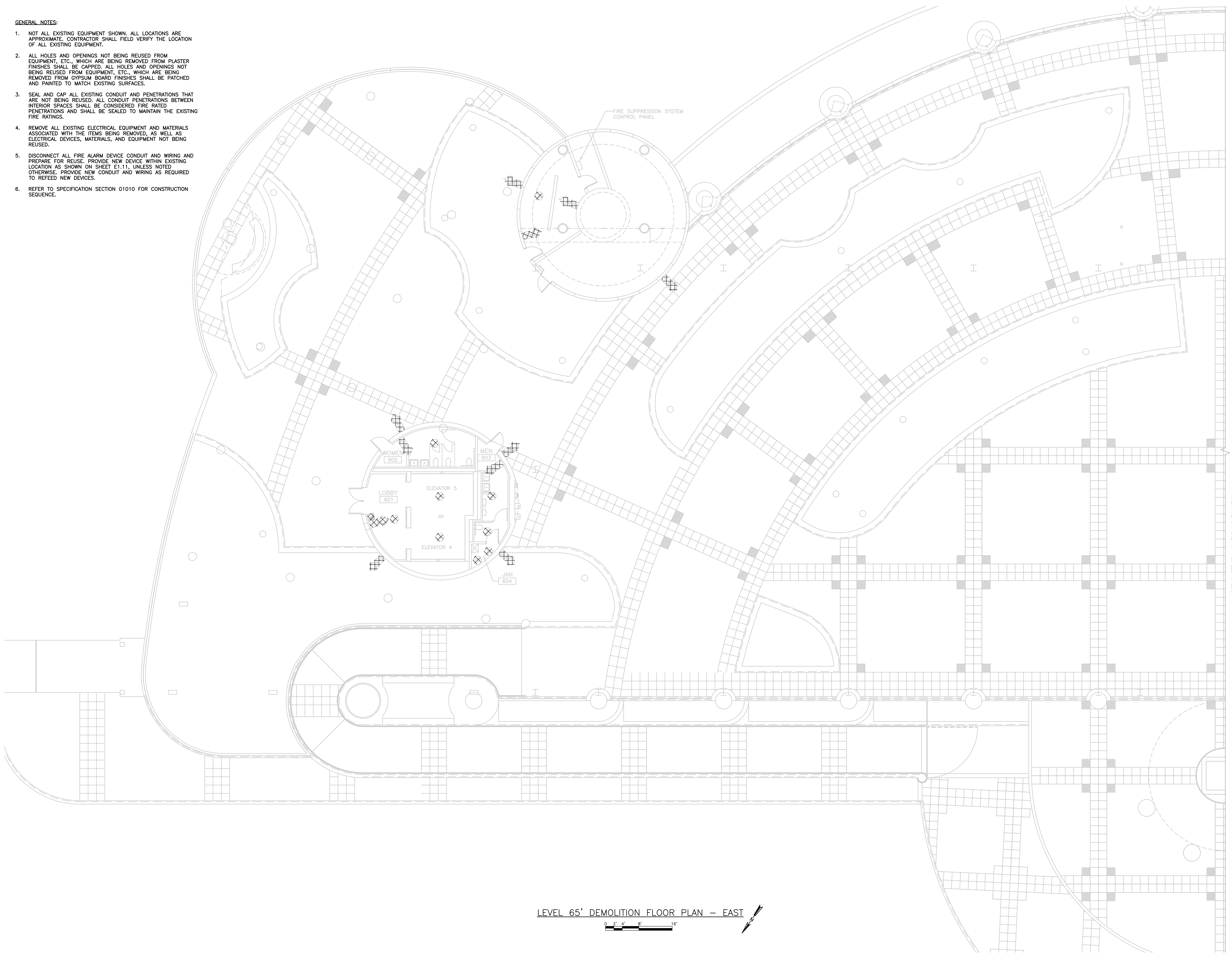
JOB NO.
1.020-095
 PROJECT MGR.
MATTHEW CARERROS



SHEET
8
ED1.5

GENERAL NOTES:

1. NOT ALL EXISTING EQUIPMENT SHOWN. ALL LOCATIONS ARE APPROXIMATE. CONTRACTOR SHALL FIELD VERIFY THE LOCATION OF ALL EXISTING EQUIPMENT.
2. ALL HOLES AND OPENINGS NOT BEING REUSED FROM EQUIPMENT, ETC., WHICH ARE BEING REMOVED FROM PLASTER FINISHES SHALL BE CAPPED. ALL HOLES AND OPENINGS NOT BEING REUSED FROM EQUIPMENT, ETC., WHICH ARE BEING REMOVED FROM GYPSUM BOARD FINISHES SHALL BE PATCHED AND PAINTED TO MATCH EXISTING SURFACES.
3. SEAL AND CAP ALL EXISTING CONDUIT AND PENETRATIONS THAT ARE NOT BEING REUSED. ALL CONDUIT PENETRATIONS BETWEEN INTERIOR SPACES SHALL BE CONSIDERED FIRE RATED. PENETRATIONS AND SHALL BE SEALED TO MAINTAIN THE EXISTING FIRE RATINGS.
4. REMOVE ALL EXISTING ELECTRICAL EQUIPMENT AND MATERIALS ASSOCIATED WITH THE ITEMS BEING REMOVED, AS WELL AS ELECTRICAL DEVICES, MATERIALS, AND EQUIPMENT NOT BEING REUSED.
5. DISCONNECT ALL FIRE ALARM DEVICE CONDUIT AND WIRING AND PREPARE FOR REUSE. PROVIDE NEW DEVICE WITHIN EXISTING LOCATION AS SHOWN ON SHEET E1.11, UNLESS NOTED OTHERWISE. PROVIDE NEW CONDUIT AND WIRING AS REQUIRED TO REFEED NEW DEVICES.
6. REFER TO SPECIFICATION SECTION 01010 FOR CONSTRUCTION SEQUENCE.



SEE SHEET ED1.12 FOR CONTINUATION

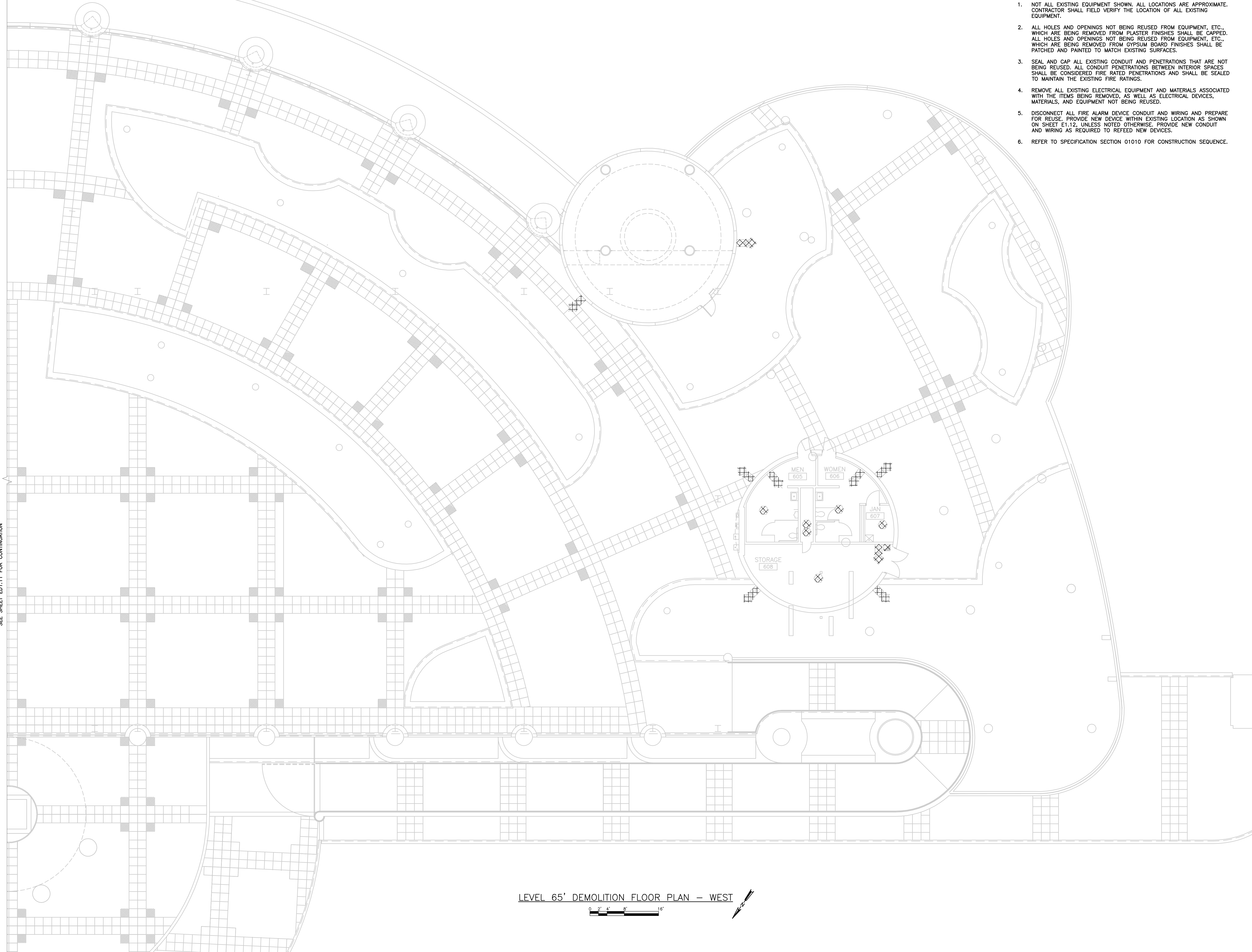
LEVEL 65' DEMOLITION FLOOR PLAN — EAST
 0 2' 4' 8' 16'

DATE	
REVISED FOR	BY

REVISIONS	
NO.	DESCRIPTION

LEVEL 65' DEMOLITION FLOOR PLAN - EAST
 MONONA TERRACE FIRE ALARM SYSTEM UPGRADES
 CITY OF MADISON
 MADISON, WISCONSIN

JOB NO. 1.020-095
PROJECT MGR. MATTHEW CARERROS
SHEET 14 ED1.11



- GENERAL NOTES:**
1. NOT ALL EXISTING EQUIPMENT SHOWN. ALL LOCATIONS ARE APPROXIMATE. CONTRACTOR SHALL FIELD VERIFY THE LOCATION OF ALL EXISTING EQUIPMENT.
 2. ALL HOLES AND OPENINGS NOT BEING REUSED FROM EQUIPMENT, ETC., WHICH ARE BEING REMOVED FROM PLASTER FINISHES SHALL BE CAPPED. ALL HOLES AND OPENINGS NOT BEING REUSED FROM EQUIPMENT, ETC., WHICH ARE BEING REMOVED FROM GYPSUM BOARD FINISHES SHALL BE PATCHED AND PAINTED TO MATCH EXISTING SURFACES.
 3. SEAL AND CAP ALL EXISTING CONDUIT AND PENETRATIONS THAT ARE NOT BEING REUSED. ALL CONDUIT PENETRATIONS BETWEEN INTERIOR SPACES SHALL BE CONSIDERED FIRE RATED PENETRATIONS AND SHALL BE SEALED TO MAINTAIN THE EXISTING FIRE RATINGS.
 4. REMOVE ALL EXISTING ELECTRICAL EQUIPMENT AND MATERIALS ASSOCIATED WITH THE ITEMS BEING REMOVED, AS WELL AS ELECTRICAL DEVICES, MATERIALS, AND EQUIPMENT NOT BEING REUSED.
 5. DISCONNECT ALL FIRE ALARM DEVICE CONDUIT AND WIRING AND PREPARE FOR REUSE. PROVIDE NEW DEVICE WITHIN EXISTING LOCATION AS SHOWN ON SHEET E1.12, UNLESS NOTED OTHERWISE. PROVIDE NEW CONDUIT AND WIRING AS REQUIRED TO REFEED NEW DEVICES.
 6. REFER TO SPECIFICATION SECTION 01010 FOR CONSTRUCTION SEQUENCE.

SEE SHEET ED1.11 FOR CONTINUATION

LEVEL 65' DEMOLITION FLOOR PLAN - WEST
 0' 2' 4' 8' 16'

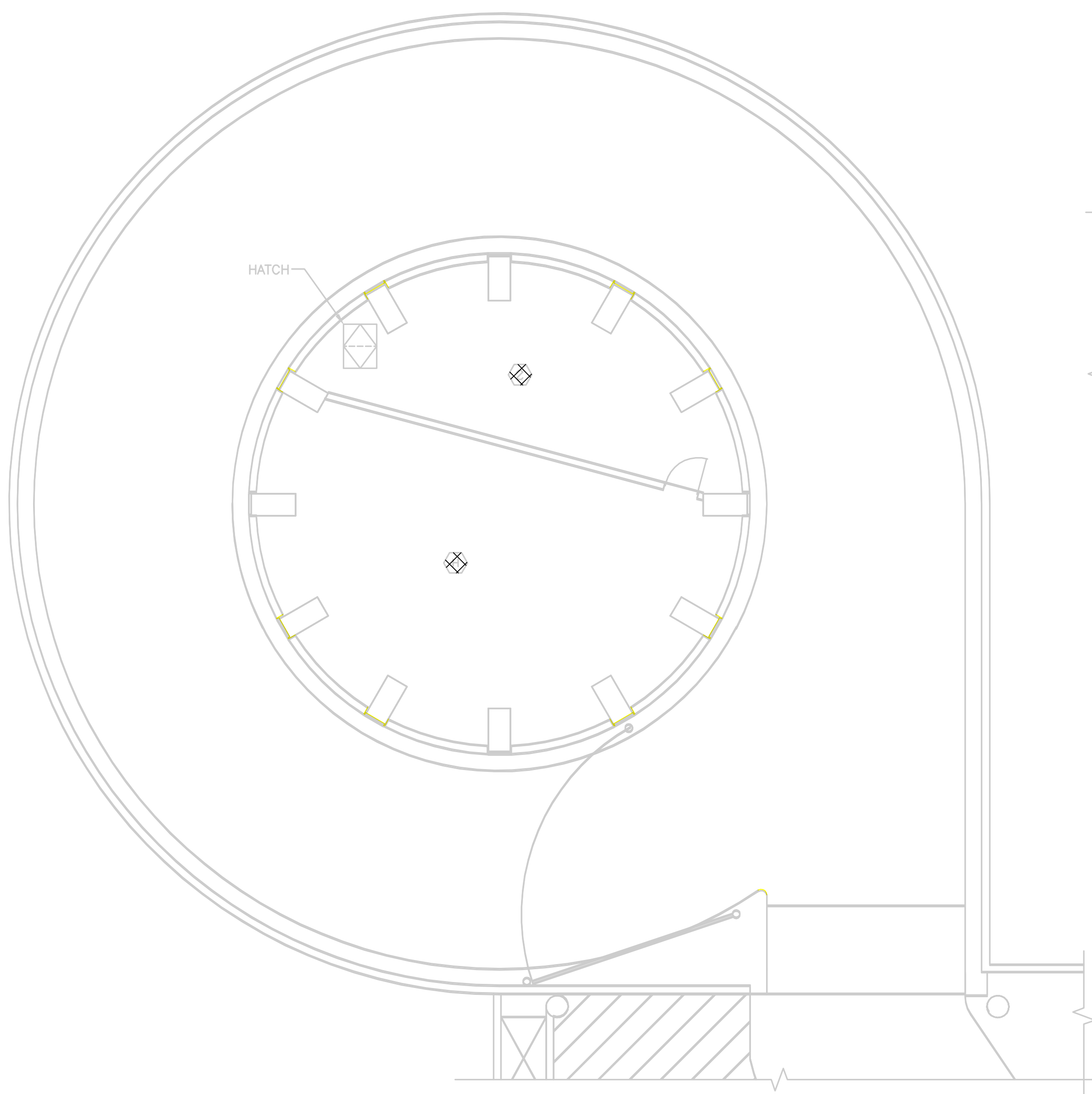
NO.	REVISED FOR	DATE

LEVEL 65' DEMOLITION FLOOR PLAN - WEST
 MONONA TERRACE FIRE ALARM SYSTEM UPGRADES
 CITY OF MADISON
 MADISON, WISCONSIN

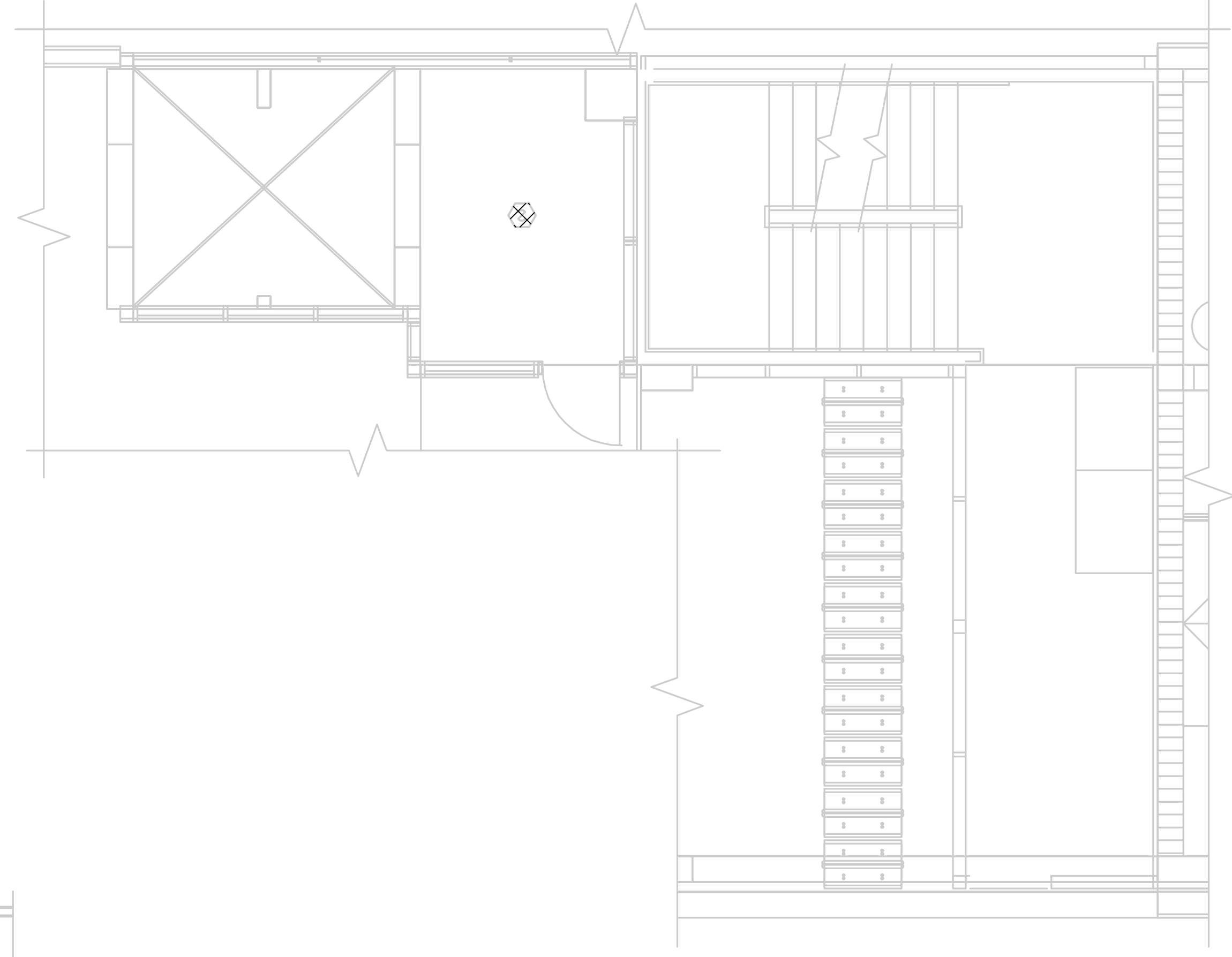
JOB NO.
 1.020-095
PROJECT MGR.
 MATTHEW CARERROS



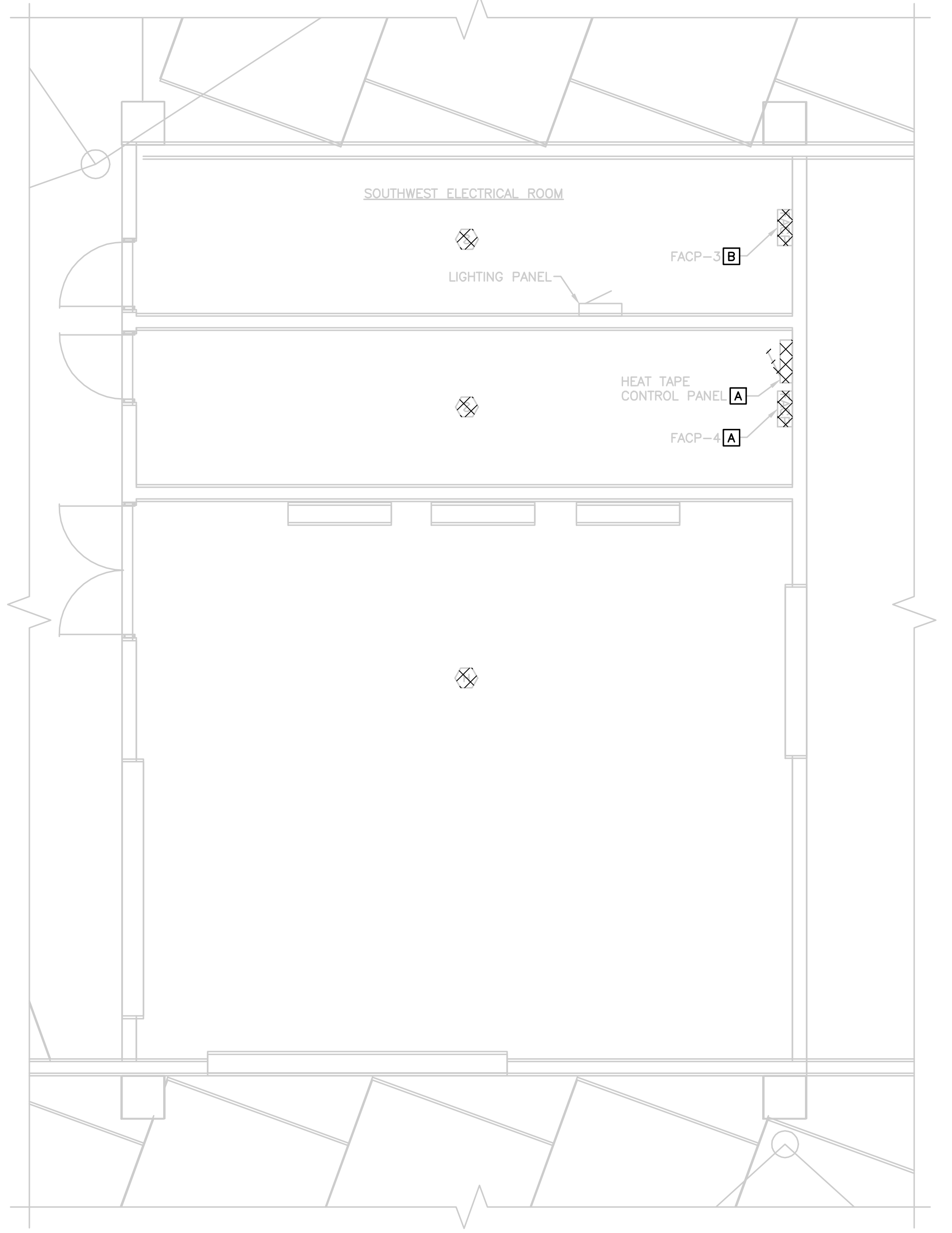
SHEET
 15
ED1.12



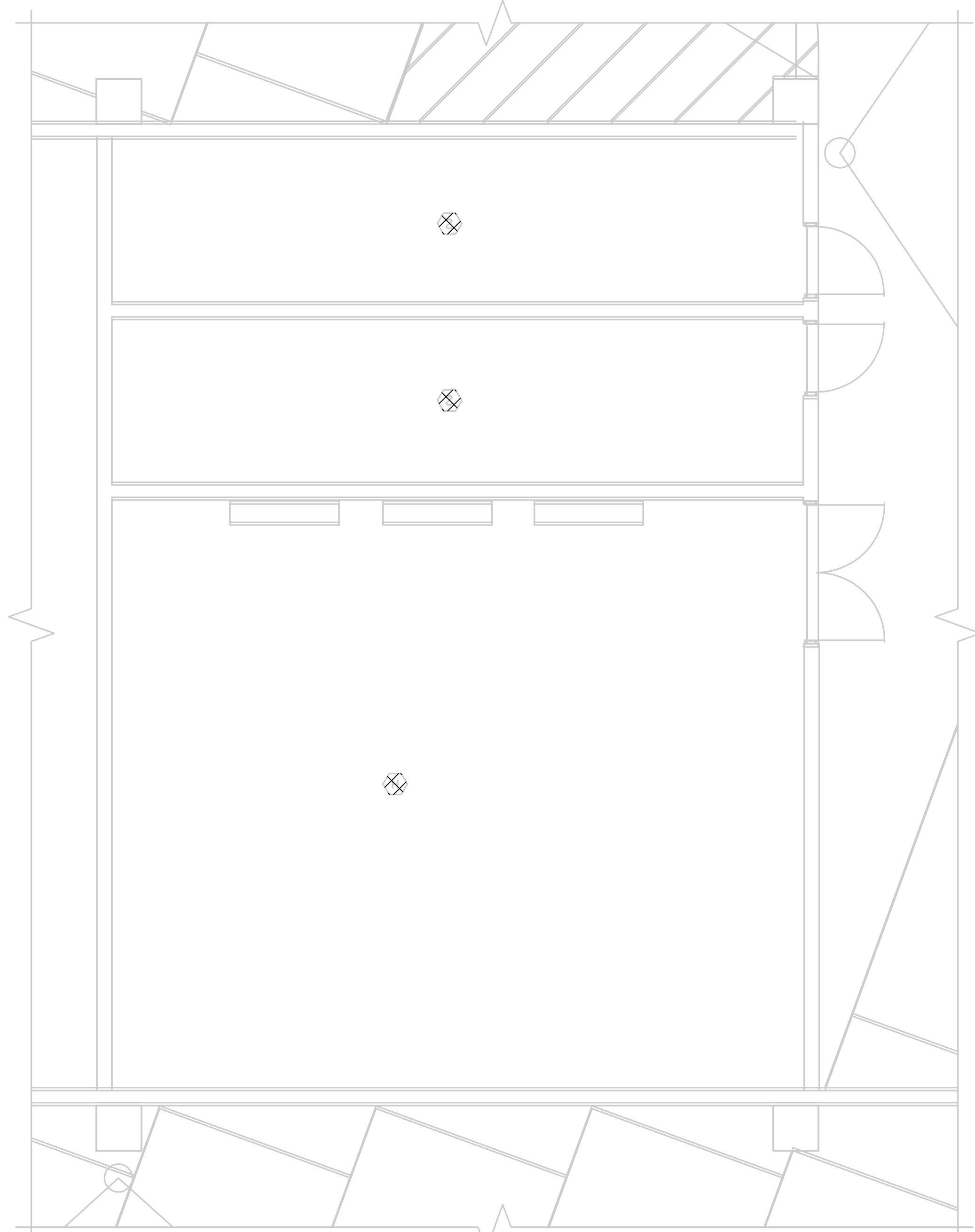
LEVEL 29' DEMOLITION ENLARGED PLAN - 1



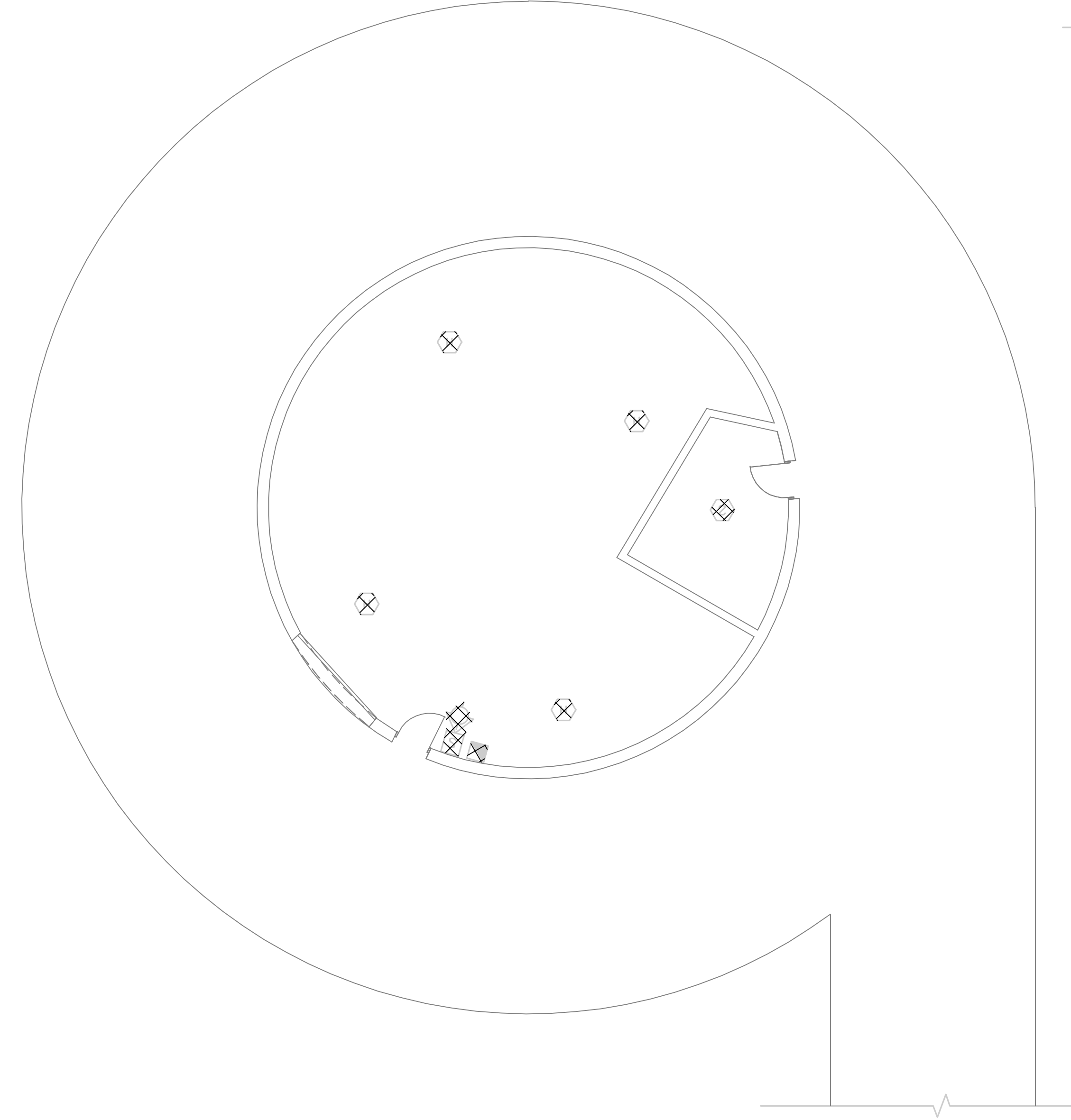
LEVEL 29' DEMOLITION ENLARGED PLAN - 2



DEMOLITION ENLARGED PLAN - 3



DEMOLITION ENLARGED PLAN - 4



LEVEL 4.6' DEMOLITION ENLARGED PLAN - 5

- GENERAL NOTES:**
1. NOT ALL EXISTING EQUIPMENT SHOWN. ALL LOCATIONS ARE APPROXIMATE. CONTRACTOR SHALL FIELD VERIFY THE LOCATION OF ALL EXISTING EQUIPMENT.
 2. ALL HOLES AND OPENINGS NOT BEING REUSED FROM EQUIPMENT, ETC., WHICH ARE BEING REMOVED FROM PLASTER FINISHES SHALL BE CAPPED. ALL HOLES AND OPENINGS NOT BEING REUSED FROM EQUIPMENT, ETC., WHICH ARE BEING REMOVED FROM GYPSUM BOARD FINISHES SHALL BE PATCHED AND PAINTED TO MATCH EXISTING SURFACES.
 3. SEAL AND CAP ALL EXISTING CONDUIT AND PENETRATIONS THAT ARE NOT BEING REUSED. ALL CONDUIT PENETRATIONS BETWEEN INTERIOR SPACES SHALL BE CONSIDERED FIRE RATED PENETRATIONS AND SHALL BE SEALED TO MAINTAIN THE EXISTING FIRE RATINGS.
 4. REMOVE ALL EXISTING ELECTRICAL EQUIPMENT AND MATERIALS ASSOCIATED WITH THE ITEMS BEING REMOVED, AS WELL AS ELECTRICAL DEVICES, MATERIALS, AND EQUIPMENT NOT BEING REUSED.
 5. DISCONNECT ALL FIRE ALARM DEVICE CONDUIT AND WIRING AND PREPARE FOR REUSE. PROVIDE NEW DEVICE WITHIN EXISTING LOCATION AS SHOWN ON SHEET E1.13, UNLESS NOTED OTHERWISE. PROVIDE NEW CONDUIT AND WIRING AS REQUIRED TO REFEED NEW DEVICES.
 6. REFER TO SPECIFICATION SECTION 01010 FOR CONSTRUCTION SEQUENCE.

- DEMOLITION NOTES:**
- [A] REMOVE FIRE ALARM CONTROL PANEL, POWER SUPPLIES, AND HEAT TAPE CONTROL PANEL, CONDUIT, WIRING, AND AUXILIARY DEVICES SHALL BE ABANDONED. CONDUITS SHALL BE PLUGGED AND LABELED INDICATING ORIGIN.
 - [B] REMOVE FIRE ALARM CONTROL PANEL, POWER SUPPLIES, AND ALL ASSOCIATED CONTROL PANEL EQUIPMENT. DISCONNECT ALL CONDUIT AND WIRING ASSOCIATED WITH REMOTE DEVICES AND PREPARE FOR REUSE.

DATE	BY	NO.	REVISIONS

DEMOLITION ENLARGED PLANS - 1
 MONONA TERRACE FIRE ALARM SYSTEM UPGRADES
 CITY OF MADISON
 MADISON, WISCONSIN

JOB NO.
1.020-095

PROJECT MGR.
MATTHEW CARERROS

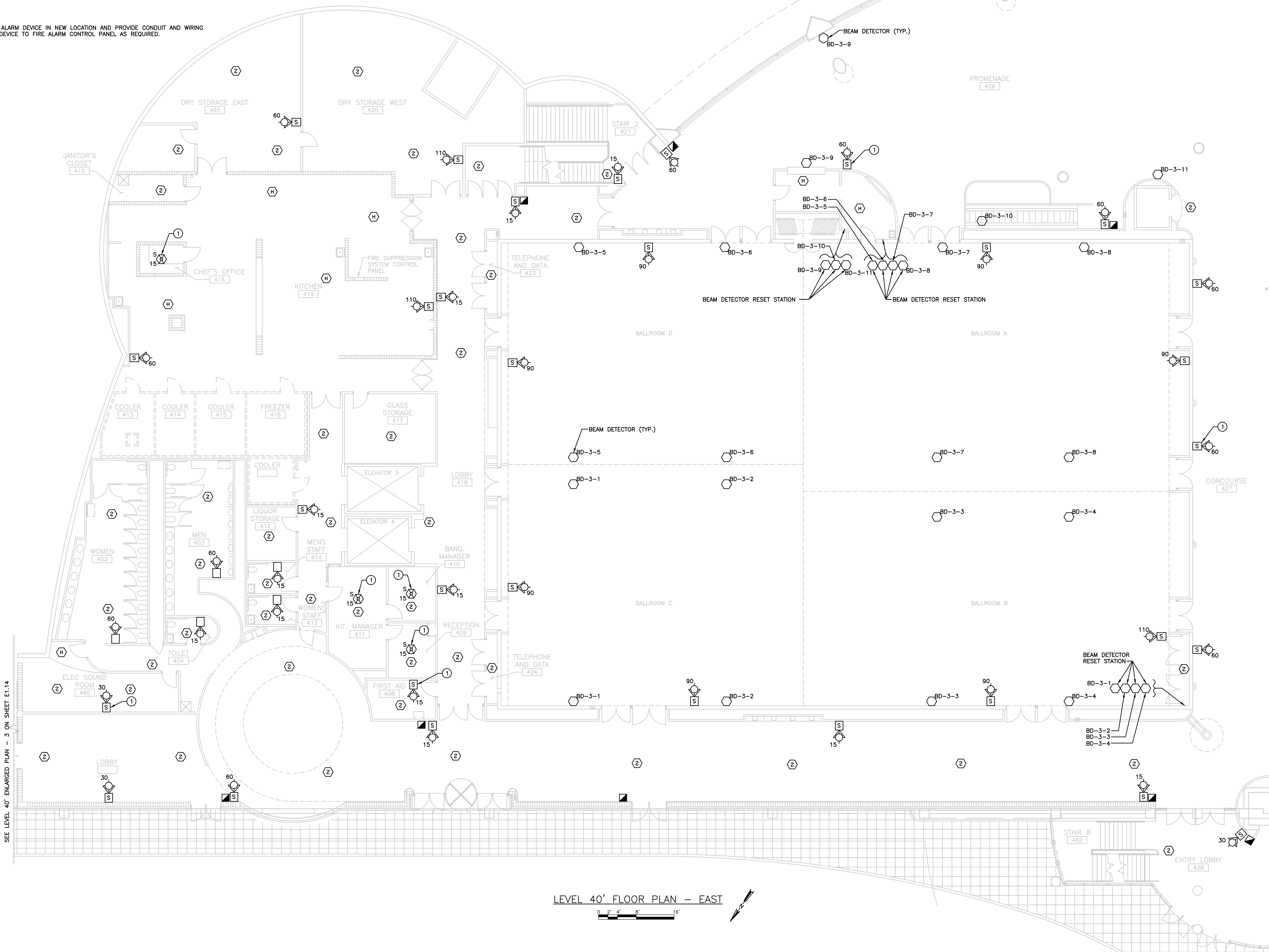
SHEET
16
ED1.13

GENERAL NOTES:

1. PROVIDE NEW FIRE ALARM DEVICES WITHIN EXISTING BOXES AND RECONNECT EXISTING WIRING, UNLESS NOTED OTHERWISE. PROVIDE ADDITIONAL CONDUIT AND WIRING AS REQUIRED.
2. PROVIDE NAC PANELS AS REQUIRED TO POWER FAS ANNUNCIATION DEVICES. PROVIDE A DEDICATED 20-AMP, 120V CIRCUIT BREAKER, WIRE, AND CONDUIT TO EACH NAC PANEL. PROVIDE SMOKE DETECTORS OVER ALL NAC PANEL LOCATIONS. CIRCUIT BREAKER SHALL BE RED AND PERMANENTLY LABELED PER NFPA.
3. ALL FIRE ALARM DEVICES SHOWN ON THIS SHEET SHALL BE CONNECTED TO FACP-1 IN FIRE COMMAND SECURITY ROOM 102.
4. FIELD VERIFY AREAS SERVED BY SPRINKLER PIPING AND ASSOCIATED FIRE ALARM FLOW AND TAMPER SWITCHES FOR DEVICE IDENTIFICATION AND FIRE ALARM SYSTEM PROGRAMMING.

KEY NOTES:

1. PROVIDE NEW FIRE ALARM DEVICE IN NEW LOCATION AND PROVIDE CONDUIT AND WIRING FROM FIRE ALARM DEVICE TO FIRE ALARM CONTROL PANEL AS REQUIRED.



LEVEL 40' FLOOR PLAN - EAST
 0 2' 4' 8' 16'

SEE SHEET E1.8 FOR CONTINUATION

NO.	DATE	REVISIONS

NO.	DATE	REVISIONS

LEVEL 40' FLOOR PLAN - EAST
 MONONA TERRACE FIRE ALARM SYSTEM UPGRADES
 CITY OF MADISON
 MADISON, WISCONSIN

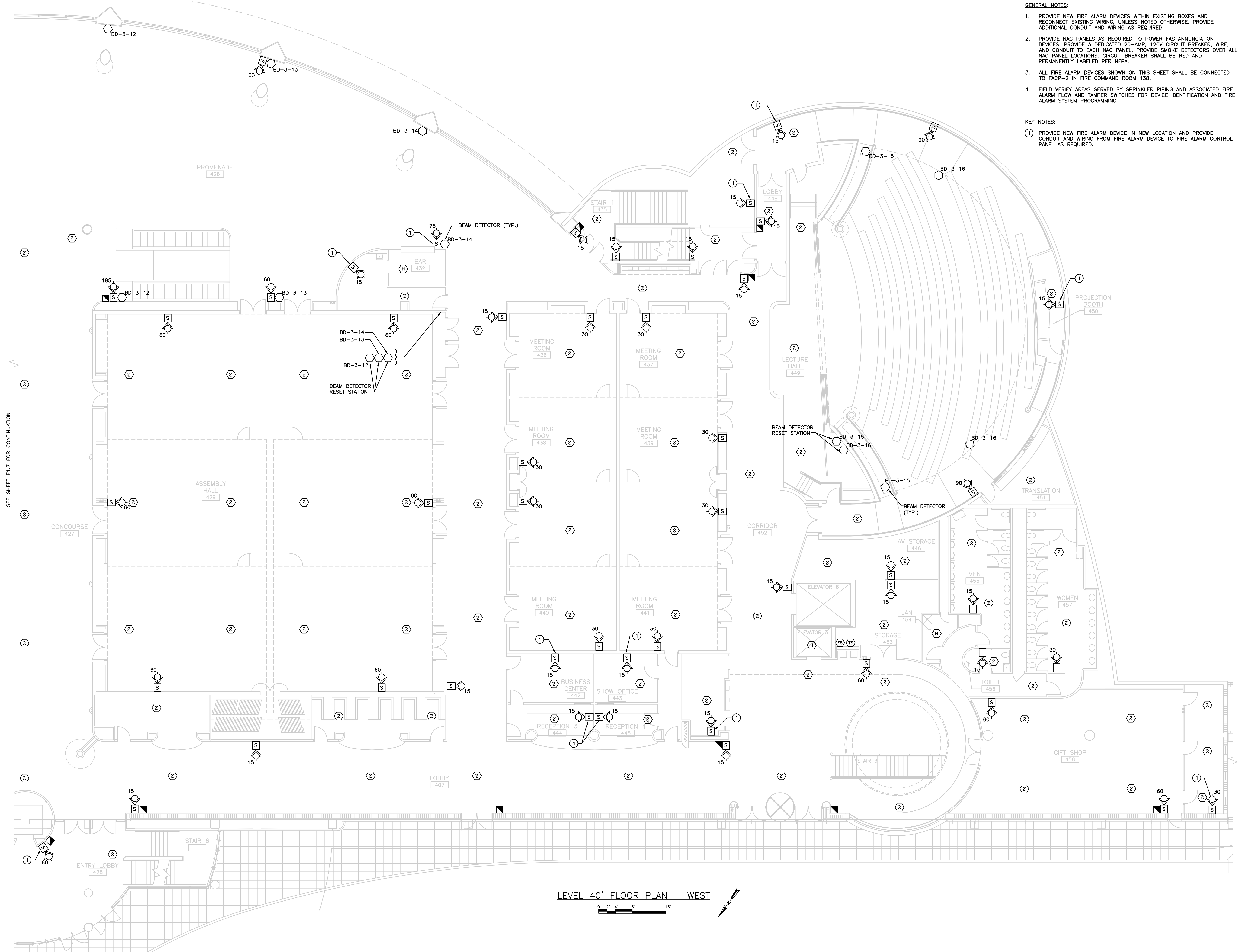
JOB NO.
1.020-095
PROJECT MGR.
MATTHEW CARERROS



SHEET
 24
E1.7

- GENERAL NOTES:**
1. PROVIDE NEW FIRE ALARM DEVICES WITHIN EXISTING BOXES AND RECONNECT EXISTING WIRING, UNLESS NOTED OTHERWISE. PROVIDE ADDITIONAL CONDUIT AND WIRING AS REQUIRED.
 2. PROVIDE NAC PANELS AS REQUIRED TO POWER FAS ANNUNCIATION DEVICES. PROVIDE A DEDICATED 20-AMP, 120V CIRCUIT BREAKER, WIRE, AND CONDUIT TO EACH NAC PANEL. PROVIDE SMOKE DETECTORS OVER ALL NAC PANEL LOCATIONS. CIRCUIT BREAKER SHALL BE RED AND PERMANENTLY LABELED PER NFPA.
 3. ALL FIRE ALARM DEVICES SHOWN ON THIS SHEET SHALL BE CONNECTED TO FACP-2 IN FIRE COMMAND ROOM 138.
 4. FIELD VERIFY AREAS SERVED BY SPRINKLER PIPING AND ASSOCIATED FIRE ALARM FLOW AND TAMPER SWITCHES FOR DEVICE IDENTIFICATION AND FIRE ALARM SYSTEM PROGRAMMING.

- KEY NOTES:**
1. PROVIDE NEW FIRE ALARM DEVICE IN NEW LOCATION AND PROVIDE CONDUIT AND WIRING FROM FIRE ALARM DEVICE TO FIRE ALARM CONTROL PANEL AS REQUIRED.



SEE SHEET E1.7 FOR CONTINUATION

LEVEL 40' FLOOR PLAN -- WEST

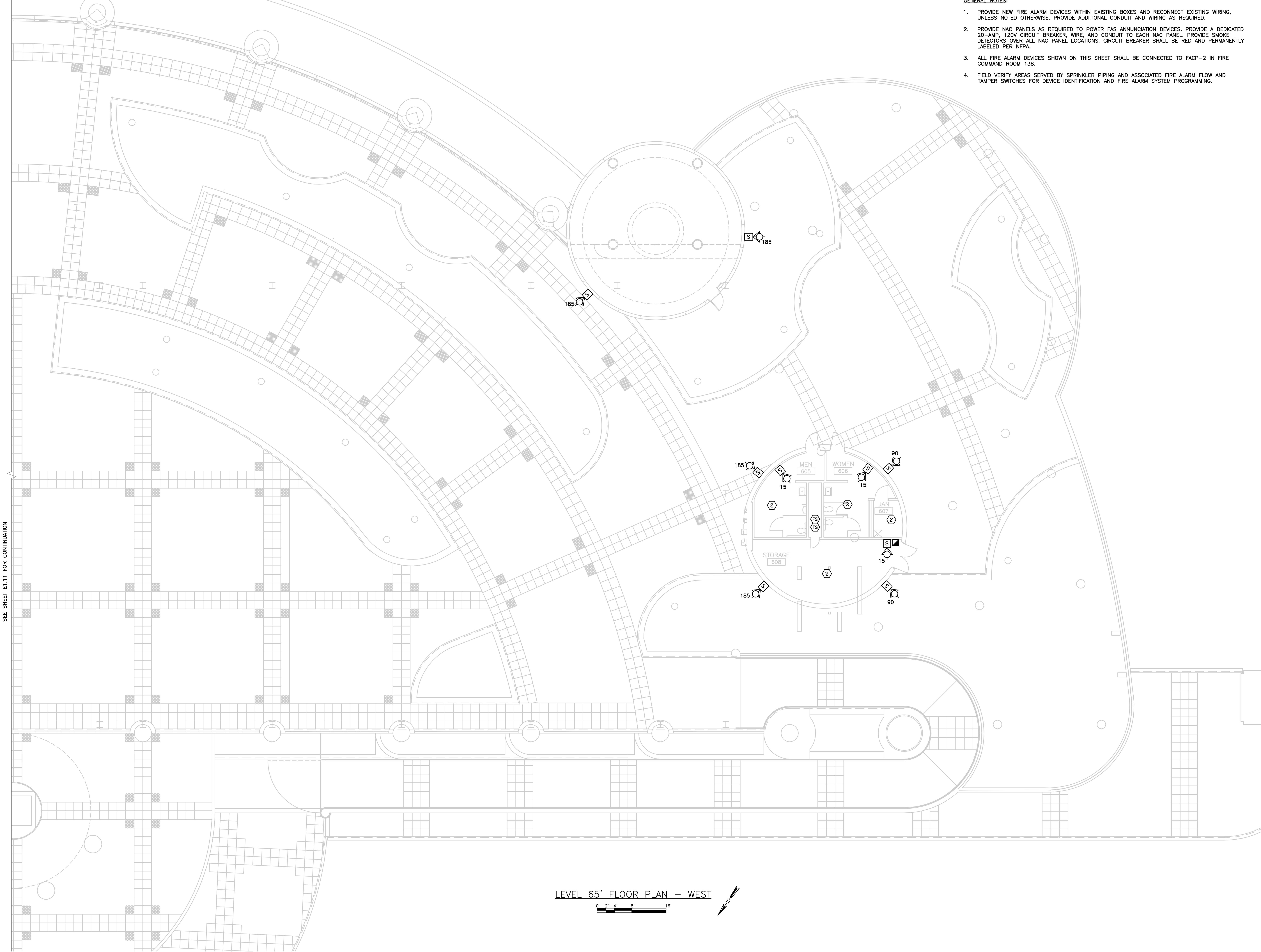
NO.	DATE	BY	REVISIONS

LEVEL 40' FLOOR PLAN - WEST
 MONONA TERRACE FIRE ALARM SYSTEM UPGRADES
 CITY OF MADISON
 MADISON, WISCONSIN

JOB NO.
1.020-095
 PROJECT MGR.
MATTHEW CARERROS



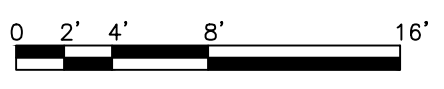
SHEET
25
E1.8



- GENERAL NOTES:**
1. PROVIDE NEW FIRE ALARM DEVICES WITHIN EXISTING BOXES AND RECONNECT EXISTING WIRING, UNLESS NOTED OTHERWISE. PROVIDE ADDITIONAL CONDUIT AND WIRING AS REQUIRED.
 2. PROVIDE NAC PANELS AS REQUIRED TO POWER FAS ANNUNCIATION DEVICES. PROVIDE A DEDICATED 20-AMP, 120V CIRCUIT BREAKER, WIRE, AND CONDUIT TO EACH NAC PANEL. PROVIDE SMOKE DETECTORS OVER ALL NAC PANEL LOCATIONS. CIRCUIT BREAKER SHALL BE RED AND PERMANENTLY LABELED PER NFPA.
 3. ALL FIRE ALARM DEVICES SHOWN ON THIS SHEET SHALL BE CONNECTED TO FACP-2 IN FIRE COMMAND ROOM 138.
 4. FIELD VERIFY AREAS SERVED BY SPRINKLER PIPING AND ASSOCIATED FIRE ALARM FLOW AND TAMPER SWITCHES FOR DEVICE IDENTIFICATION AND FIRE ALARM SYSTEM PROGRAMMING.

SEE SHEET E1.11 FOR CONTINUATION

LEVEL 65' FLOOR PLAN - WEST



NO.	DATE	REVISIONS

LEVEL 65' FLOOR PLAN - WEST
 MONONA TERRACE FIRE ALARM SYSTEM UPGRADES
 CITY OF MADISON
 MADISON, WISCONSIN

JOB NO.
1.020-095
 PROJECT MGR.
MATTHEW CARERROS



SHEET
29
E1.12

